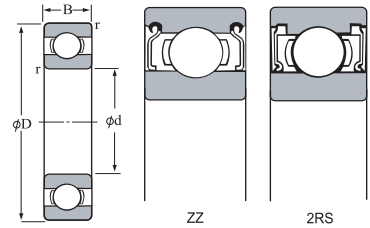
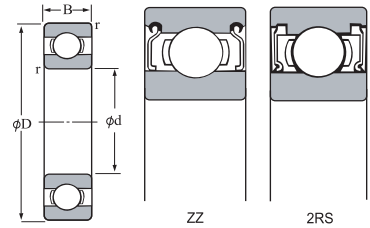


# Ball Bearings - Miniature



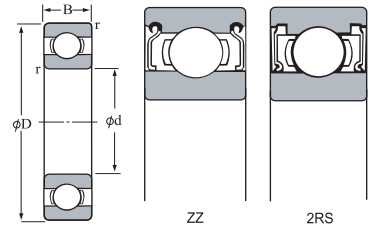
BEARING NUMBER	NOMINAL DIMENSIONS [mm]				LOAD RATING(kN)		LIMITING SPEED(RPM)		WEIGHT GRAMS
	d	D	B	r	Dynamic C	Stactic Co	Grease Lube	Oil Lube	
604	4	12	4	0.20	0.97	0.36	53000	63000	2.1
605	5	14	5	0.20	1.30	0.48	50000	60000	3.5
606	6	17	6	0.30	1.95	0.74	35000	43000	5.8
607	7	19	6	0.30	2.60	1.05	40000	47000	7.6
608	8	22	7	0.30	3.35	1.40	28000	35000	12.0
609	9	24	7	0.30	3.35	1.40	33000	40000	15.0
624	4	13	5	0.20	1.30	0.49	40000	38000	3.0
625	5	16	5	0.30	1.88	0.68	36000	43000	4.5
626	6	19	6	0.30	2.60	1.05	35000	43000	8.1
627	7	22	7	0.30	3.30	1.35	31000	37000	13.0
628	8	24	8	0.30	3.35	1.40	28000	35000	18.0
629	9	26	8	0.60	4.55	1.95	27000	33000	20.0
686	6	13	3.5	0.15	1.10	0.44	48000	57000	1.8
687	7	14	3.5	0.15	1.15	0.51	45000	54000	2.0
689	9	17	4	0.20	1.35	0.66	39000	46000	3.5
695	5	13	4	0.20	1.10	0.43	50000	60000	2.2
696	6	15	5	2.00	1.75	0.67	45000	54000	3.9
697	7	17	5	3.00	1.60	0.71	42800	50000	5.3
698	8	19	6	3.00	2.25	0.91	39000	46000	7.2
699	9	20	6	0.30	2.45	1.05	35000	42000	7.5

# Ball Bearings - Miniature



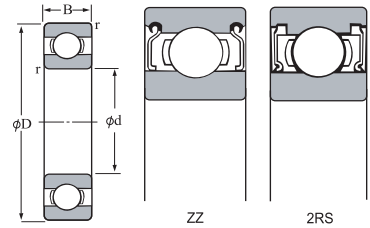
BEARING NUMBER	NOMINAL DIMENSIONS [mm]				LOAD RATING(kN)		LIMITING SPEED(RPM)		WEIGHT GRAMS
	d	D	B	r	Dynamic C	Stactic Co	Grease Lube	Oil Lube	
6800	10	19	5	0.3	1.83	0.93	34000	40000	0.005
6801	12	21	5	0.3	1.92	1.04	32000	38000	0.006
6802	15	24	5	0.3	2.08	1.26	28000	34000	0.007
6803	17	26	5	0.3	2.81	1.72	26000	30000	0.008
6804	20	32	7	0.3	4.00	2.47	22000	26000	0.018
6805	25	37	7	0.3	4.30	2.95	18000	22000	0.022
6806	30	42	7	0.3	4.70	3.65	15000	18000	0.026
6807	35	47	7	0.3	4.90	4.05	13000	16000	0.030
6808	40	52	7	0.3	4.95	4.20	12000	14000	0.033
6809	45	58	7	0.3	6.20	5.40	11000	13000	0.040
6810	50	65	7	0.3	6.60	6.10	9500	11000	0.052
6811	55	72	9	0.3	8.80	8.10	8500	10000	0.083
6812	60	78	10	0.3	11.50	10.60	8000	9500	0.104
6813	65	85	10	0.6	11.90	11.50	7500	8500	0.126
6814	70	90	10	0.6	12.10	11.90	6700	8000	0.134
6815	75	95	10	0.6	12.50	12.90	6300	7500	0.142
6816	80	100	10	0.6	12.70	13.30	6000	7100	0.150
6817	85	110	13	1	18.70	19.00	5600	6700	0.266
6818	90	115	13	1	19.00	19.70	5300	6300	0.279
6819	95	120	13	1	19.30	19.70	5000	6000	0.300
6820	100	125	13	1	19.60	21.20	4800	5600	0.309

# Ball Bearings - Miniature



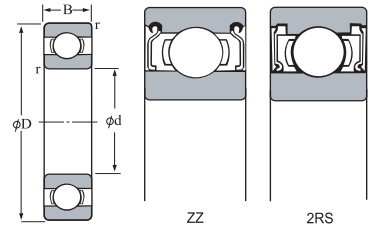
BEARING NUMBER	NOMINAL DIMENSIONS [mm]				LOAD RATING(kN)		LIMITING SPEED(RPM)		WEIGHT GRAMS
	d	D	B	r	Dynamic C	Stactic Co	Grease Lube	Oil Lube	
6900	10	22	6	0.3	2.70	1.25	32000	38000	0.010
6901	12	24	6	0.3	2.90	1.45	30000	36000	0.011
6902	15	28	7	0.3	4.30	2.25	26000	30000	0.017
6903	17	30	7	0.3	4.60	2.55	24000	28000	0.018
6904	20	37	9	0.3	6.35	3.70	19000	22000	0.036
6905	25	42	9	0.3	7.00	4.55	16000	19000	0.041
6906	30	47	9	0.3	7.25	5.00	14000	17000	0.045
6907	35	55	10	0.6	10.90	7.75	12000	15000	0.073
6908	40	62	12	0.6	13.70	9.95	11000	13000	0.112
6909	45	68	12	0.6	14.10	10.90	9500	12000	0.132
6910	50	72	12	0.6	14.50	11.70	9000	11000	0.133
6911	55	80	13	1	16.60	14.10	8000	9500	0.185
6912	60	85	13	1	20.20	17.30	7500	9000	0.192

# Ball Bearings - Miniature



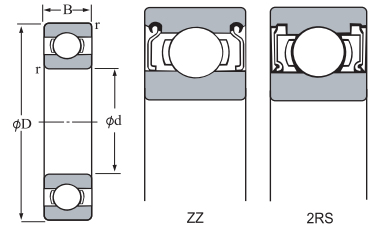
BEARING NUMBER		NOMINAL DIMENSIONS [mm]				LOAD RATING(kgf)		weight
		d	D	B	r	Dynamic C	Stactic Co	KGS
E3	EN3	3	16	5	0.15	168.0	29.0	0.005
E4	EN4	4	16	5	0.15	168.0	29.0	0.005
E5	EN5	5	16	5	0.15	168.0	29.0	0.005
E6	EN6	6	21	7	0.3	254.0	46.0	0.011
E7	EN7	7	22	7	0.3	254.0	46.0	0.013
E8	EN8	8	24	7	0.3	350.0	66.0	0.016
E9	EN9	9	28	8	0.3	465.0	90.0	0.020
E10	EN10	10	28	8	0.3	465.0	90.0	0.022
E11	EN11	11	32	7	0.3	450.0	86.0	0.025
E12	EN12	12	32	7	0.3	450.0	86.0	0.027
E13	EN13	13	30	7	0.3	450.0	86.0	0.029
E14	EN14	14	35	8	0.3	590.0	117.0	0.031
E15	EN15	15	35	8	0.3	590.0	117.0	0.034
E16	EN16	16	38	10	0.6	705.0	141.0	0.049
E17	EN17	17	40	10	0.6	750.0	153.0	0.055

# Ball Bearings - Miniature Inch



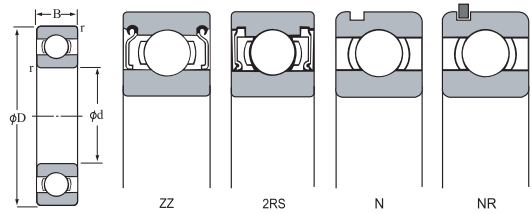
Bearing No.	NOMINAL DIMENSIONS [mm]				LOAD RATING(kgf)		weight
	d mm	D mm	open mm	B ZZmm	Dynamic (Cr)	Static (Cor)	KGS
R2	3.1750	9.5250	3.9670	3.9670	630	218	0.015
R3	4.7620	12.7000	3.9670	4.9780	1300	485	0.022
R4	6.3500	15.8750	4.9780	4.9780	1480	615	0.048
R6	9.5250	22.2250	5.5580	7.1420	3350	1410	0.090
R8	12.7000	28.5750	6.3500	7.9380	5100	2220	0.014
R10	15.8750	34.9250	7.1440	8.7320	6000	2780	0.028
R12	19.0500	41.2750	7.9380	11.1130	9350	4450	0.042
R14	22.2250	47.6250	9.5250	12.7000	10100	4950	0.071
R16	25.4000	50.8000	9.5250	12.7000	10700	5450	0.085
R18	28.5750	53.9750	9.5250	12.7000	12400	6200	0.090
R20	31.7500	57.1500	9.5250	12.7000	13200	6850	0.095
R22	34.9250	63.5000	11.1120	14.2880	15900	8500	0.120
R24	38.1000	66.6750	11.1120	14.2880	16800	9250	0.150

# Deep Groove Ball Bearings



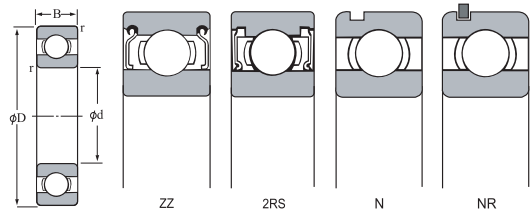
BEARING NUMBER	NOMINAL DIMENSIONS [MM]				LOAD RATING(kN)		LIMITING SPEED(RPM)		
					Dynamic C	Stactic Co	Oil Lube	Grease Lube	GRAMS KG
	d	D	B	r					
16002	15	30	8	0.3	4	2.05	28000	22000	0.025
16003	17	32	8	0.3	6	3.25	26000	20000	0.032
16004	20	42	8	0.3	7.95	4.5	20000	17000	0.050
16005	25	47	8	0.3	8.4	5.1	18000	15000	0.060
16006	30	55	9	3	11.2	7.35	12000	15000	0.085
16007	35	62	9	0.3	12.2	8.85	13000	10000	0.111
16008	40	68	9	0.3	13.3	9.8	12000	9500	0.125
16009	45	75	10	0.6	15.5	12.3	11000	9000	0.170
16010	50	80	10	0.6	16.3	13.1	10000	8500	0.180
16011	55	90	11	0.6	19.3	16.3	9000	7500	0.260
16012	60	95	11	0.6	20	17.6	8500	7000	0.280
16013	65	100	11	0.6	22.9	19.6	7500	6300	0.300
16014	70	110	13	0.6	27.9	25	7000	6000	0.433
16015	75	115	13	0.6	28.5	26.8	6700	5600	0.457
16016	80	125	14	0.6	31.9	29.7	6300	5300	0.597
16017	85	130	14	0.6	33.8	33.5	6000	5000	0.626
16018	90	140	16	1	41.9	40.4	5300	4500	0.848
16019	95	145	24	1	60.5	53.6	5000	4300	0.885
16020	100	150	16	1	45	44	5000	4300	0.910

# Deep Groove Ball Bearings



BEARING NUMBER	NOMINAL DIMENSIONS [mm]				LOAD RATING(kN)		LIMITING SPEED(RPM)		
	d	D	B	r	Dynamic C	Stactic Co	Grease Lube	Oil Lube	WEIGHT KG
6000	10	26	8	0.3	4.55	1.95	31000	36000	0.019
6001	12	28	8	0.3	5.10	2.40	27000	32000	0.022
6002	15	32	9	0.3	5.60	2.85	23000	27000	0.030
6003	17	35	10	0.3	6.00	3.25	21000	25000	0.039
6004	20	42	12	0.6	9.40	5.05	17000	21000	0.069
6005	25	47	12	0.6	10.10	5.85	15000	18000	0.080
6006	30	55	13	1.0	13.20	8.25	13000	15000	0.116
6007	35	62	14	1.0	15.90	10.30	11000	13000	0.155
6008	40	68	15	1.0	16.70	11.50	10000	12000	0.192
6009	45	75	16	1.0	21.00	15.10	9200	11000	0.245
6010	50	80	16	1.0	21.80	16.60	8400	9900	0.261
6011	55	90	18	1.1	28.30	21.20	7600	8900	0.385
6012	60	95	18	1.1	29.40	23.20	7100	8400	0.415
6013	65	100	18	1.1	30.50	25.20	6600	7800	0.435
6014	70	110	20	1.1	38.10	30.90	6100	7200	0.602
6015	75	115	20	1.1	39.60	33.50	5700	6800	0.638
6016	80	125	22	1.1	47.6	39.8	5300	6300	0.850
6017	85	130	22	1.1	49.5	43.1	5000	5900	0.890
6018	90	140	24	1.5	58.2	49.7	4700	5600	1.160
6019	95	145	24	1.5	60.4	53.9	4400	5200	1.210
6020	100	150	24	1.5	60.2	54.2	4300	5100	1.250

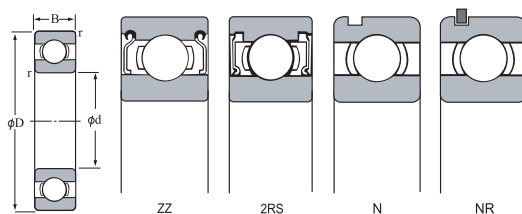
# Deep Groove Ball Bearings



BEARING NUMBER	NOMINAL DIMENSIONS [mm]				LOAD RATING(kN)		LIMITING SPEED(RPM)		
	d	D	B	r	Dynamic	Stactic	Grease	Oil	WEIGHT KG
					C	Co	Lube	Lube	
6200	10	30	9	0.6	5.10	2.40	24000	29000	0.032
6201	12	32	10	0.6	6.80	3.05	22000	27000	0.037
6202	15	35	11	0.6	7.65	3.75	20000	24000	0.045
6203	17	40	12	0.6	9.55	4.80	17000	21000	0.065
6204	20	47	14	1.0	12.80	6.65	15000	17000	0.106
62/22	22	50	14	1.0	12.80	6.65	15000	17000	0.118
6205	25	52	15	1.0	14.00	7.85	13000	15000	0.128
62/28	28	58	16	1.0	17.90	9.75	12000	14000	0.173
6206	30	62	16	1.0	19.50	11.30	11000	13000	0.199
62/32	32	65	17	1.0	23.50	13.10	10000	12000	0.228
6207	35	72	17	1.1	25.70	15.40	9200	11000	0.288
6208	40	80	18	1.1	29.10	17.80	8300	10000	0.366
6209	45	85	19	1.1	32.70	20.30	7700	9200	0.407
6210	50	90	20	1.1	35.10	23.30	7100	8500	0.463
6211	55	100	21	1.5	43.40	29.40	6300	7600	0.607
6212	60	110	22	1.5	52.40	36.20	5700	6900	0.783
6213	65	120	23	1.5	57.20	40.10	5400	6400	0.990
6214	70	125	24	1.5	62.20	44.10	5100	6100	1.070
6215	75	130	25	1.5	67.40	48.30	4800	5800	1.180
6216	80	140	26	2.0	72.70	53	4500	5400	1.400
6217	85	150	28	2.0	84.00	61.9	4200	5000	1.790
6218	90	160	30	2.0	96.10	71.5	3900	4700	2.150
6219	95	170	32	2.1	109.00	81.9	3700	4400	2.620
6220	100	180	34	2.1	122.00	93.1	3500	4200	3.140
6221	105	190	36	2.1	133.00	105	3300	3900	3.700
6222	110	200	38	2.1	144.00	117	3100	3700	4.360

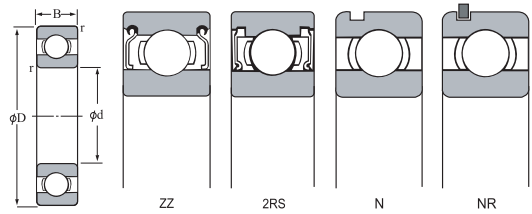


# Deep Groove Ball Bearings



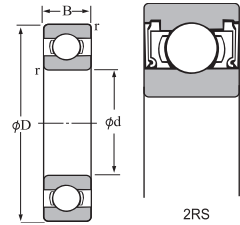
BEARING NUMBER	NOMINAL DIMENSIONS [mm]				LOAD RATING(kN)		LIMITING SPEED(RPM)		
	d	D	B	r	Dynamic	Stactic	Grease	Oil	WEIGHT KG
					C	Co	Lube	Lube	
6300	10	35	11	0.6	8.10	3.45	22000	27000	0.053
6301	12	37	12	1.0	9.70	4.20	20000	25000	0.060
6302	15	42	13	1.0	11.40	5.45	17000	20000	0.082
6303	17	47	14	1.0	13.60	6.65	15000	18000	0.115
6304	20	52	15	1.1	15.90	7.85	14000	17000	0.144
63/22	22	56	16	1.1	18.50	9.40	13000	15000	0.201
6305	25	62	17	1.1	20.60	11.30	11000	13000	0.232
63/28	28	68	18	1.1	23.50	13.10	10000	12000	0.328
6306	30	72	19	1.1	26.70	15.00	9600	12000	0.346
63/32	32	75	20	1.1	30.1	16.20	9300	11000	0.437
6307	35	80	21	1.5	33.40	19.30	8500	10000	0.457
6308	40	90	23	1.5	40.70	24.00	7700	9200	0.633
6309	45	100	25	1.5	48.90	29.50	6800	8100	0.833
6310	50	110	27	2.0	62.00	38.30	6100	7300	1.070
6311	55	120	29	2.0	71.60	45.00	5600	6700	1.370
6312	60	130	31	2.1	81.90	52.20	5200	6200	1.700
6313	65	140	33	2.1	92.70	59.90	4800	5800	2.080
6314	70	150	35	2.1	104.00	68.20	4500	5400	2.520
6315	75	160	37	2.1	113.00	77.20	4200	5000	3.020
6316	80	170	39	2.1	123.00	86.70	3900	4700	3.590
6317	85	180	41	3.0	133.00	96.80	3700	4400	4.230
6318	90	190	43	3.0	143.00	107.00	3500	4200	4.910
6319	95	200	45	3.0	153.00	119.00	3300	4000	5.670
6320	100	215	47	3.0	173.00	141.00	3000	3600	7.000
6321	105	225	49	3.0	184.00	153.00	2900	3500	8.050
6322	110	240	50	3.0	205.00	180	2700	3200	9.540

# Deep Groove Ball Bearings



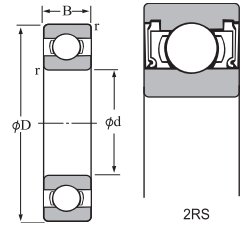
BEARING NUMBER	NOMINAL DIMENSIONS [mm]				LOAD RATING(kN)		LIMITING SPEED(RPM)		
	d	D	B	r	Dynamic C	Stactic Co	Grease Lube	Oil Lube	WEIGHT KG
6403	17	62	17	1.1	20.70	9.85	13000	15000	0.270
6404	20	72	19	1.1	31.00	15.20	11000	13000	0.400
6405	25	80	21	1.5	36.10	19.40	9100	11000	0.530
6406	30	90	23	1.5	43.40	23.90	8100	9700	0.735
6407	35	100	25	1.5	55.00	31.00	7200	8600	0.952
6408	40	110	27	2.0	63.70	36.60	6600	7900	1.230
6409	45	120	29	2.0	77.20	45.10	6000	7200	1.530
6410	50	130	31	2.1	83.00	49.50	5500	6600	1.880
6411	55	140	33	2.1	100.00	62.30	5000	6000	2.290
6412	60	150	35	2.1	110.00	70.80	4600	5500	2.770
6413	65	160	37	2.1	118.00	79.20	4300	5200	3.300
6414	70	180	42	3.0	144.00	104.00	3900	4600	4.830
6415	75	190	45	3.0	154.00	115.00	3600	4400	5.870

# Deep Groove Ball Bearings



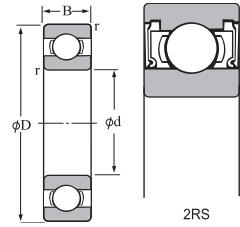
BEARING NUMBER	NOMINAL DIMENSIONS[mm]			LOAD RATING(kN)		LIMITING SPEED(RPM)		WEIGHT KG
	d	D	B	Dynamic C	Stactic Co	Grease Lube		
62200 2RS	10	30	14	5.1	2.4	17000	0.04	
62201 2RS	12	32	14	6.1	2.8	15000	0.05	
62202 2RS	15	35	14	7.8	3.6	13000	0.05	
62203 2RS	17	40	16	9.6	4.6	12000	0.08	
62204 2RS	20	47	18	12.8	6.7	10000	0.13	
62205 2RS	25	52	18	14.0	7.9	8500	0.15	
62206 2RS	30	62	20	19.5	11.3	7500	0.24	
62207 2RS	35	72	23	25.7	15.3	6300	0.37	
62208 2RS	40	80	23	29.1	17.8	5600	0.44	
62209 2RS	45	85	23	32.5	20.4	5000	0.48	
62210 2RS	50	90	23	35.0	23.2	4800	0.52	

# Deep Groove Ball Bearings



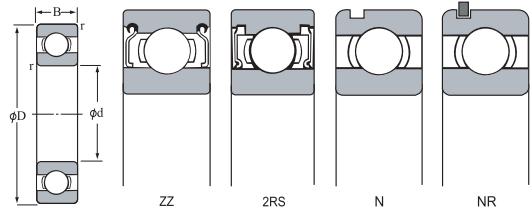
BEARING NUMBER	NOMINAL DIMENSIONS[mm]			LOAD RATING(kN)		LIMITING SPEED(RPM)	
	d	D	B	Dynamic C	Stactic Co	Grease Lube	WEIGHT KG
62300 2RS	10	35	17	8.2	3.5	15000	0.06
62301 2RS	12	37	17	9.7	4.2	14000	0.07
62302 2RS	15	42	17	11.4	5.5	12000	0.11
62303 2RS	17	47	19	13.5	6.6	11000	0.15
62304 2RS	20	52	21	15.9	7.9	9500	0.20
62305 2RS	25	62	24	21.2	10.9	7500	0.32
62306 2RS	30	72	27	26.7	15.0	6300	0.48
62307 2RS	35	80	31	33.5	19.1	6000	0.66
62308 2RS	40	90	33	40.5	24.0	5000	0.89
62309 2RS	45	100	36	53.0	32.0	4500	1.15
62310 2RS	50	110	40	62.0	38.5	4300	1.55

# Deep Groove Ball Bearings



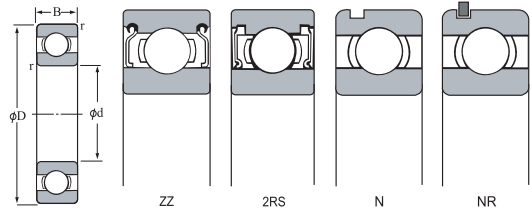
BEARING NUMBER	NOMINAL DIMENSIONS[mm]			LOAD RATING(kN)		LIMITING SPEED(RPM)	
	d	D	B	Dynamic	Stactic	Grease	WEIGHT
				C	Co	Lube	KG
63000 2RS	10	26	12	4.62	2.00	19000	0.025
63001 2RS	12	28	12	5.10	2.39	17000	0.029
63002 2RS	15	32	13	5.60	2.84	14000	0.039
63003 2RS	17	35	14	6.80	3.35	13000	0.052
63004 2RS	20	42	16	9.40	5.05	11000	0.086
63005 2RS	25	47	16	10.10	5.85	9500	0.100
63006 2RS	30	55	19	13.20	8.30	8000	0.160
63007 2RS	35	62	20	16.00	10.30	7000	0.210
63008 2RS	40	68	21	16.80	11.50	6300	0.260
63009 2RS	45	75	23	21.00	15.10	5600	0.340
63010 2RS	50	80	23	21.80	16.60	5000	0.370

# Deep Groove Ball Bearings Inch



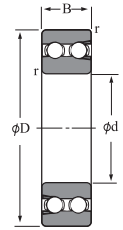
BEARING NUMBER	NOMINAL DIMENSIONS[mm]				LOAD RATING(kN)		WEIGHT KG
	d	D	B	r	Dynamic C	Stactic Co	
RMS4	12.700	41.275	15.875	1.6	9.460	4.413	0.100
RMS 5	15.875	46.038	15.875	1.6	11.570	5.540	0.110
RMS 6	19.050	50.800	17.462	1.6	13.820	6.810	0.160
RMS 7	22.225	57.150	17.462	1.6	18.530	9.750	0.200
RMS 8	25.400	63.500	19.050	2.4	20.590	11.270	0.250
RMS 9	28.575	71.438	20.638	2.4	26.670	15.000	0.380
RMS 10	31.750	79.375	22.225	2.4	30.010	17.160	0.510
RMS 11	34.925	88.900	22.225	2.4	36.970	21.570	0.610
RMS 12	38.100	95.250	23.812	2.4	44.710	26.570	0.770
RMS 13	41.275	101.600	23.812	2.4	48.830	29.510	0.900
RMS 14	44.450	107.950	26.988	2.4	57.460	35.200	1.040
RMS 15	47.625	114.300	26.988	2.4	61.980	38.240	1.220
RMS 16	50.800	114.300	26.988	2.4	61.980	38.240	1.220
RMS 18	57.150	127.000	31.750	3.2	71.880	45.600	1.720
RMS 20	63.500	139.700	31.750	3.2	92.670	59.920	2.060

# Deep Groove Ball Bearings Inch



BEARING NUMBER	NOMINAL DIMENSIONS[mm]				LOAD RATING(kN)		WEIGHT KG
	d	D	B	r	Dynamic C	Stactic Co	
RLS 4	12.700	33.338	9.525	0.8	6.790	3.040	0.030
RLS 5	15.875	39.688	11.112	0.8	9.560	4.550	0.060
RLS 6	19.050	47.625	14.288	1.6	12.837	6.170	0.110
RLS 7	22.225	50.800	14.288	1.6	12.964	6.170	0.130
RLS 8	25.400	57.150	15.875	1.6	13.229	6.880	0.170
RLS 9	28.575	63.500	15.875	1.6	19.470	10.100	0.210
RLS 10	31.750	69.850	17.462	1.6	19.480	13.030	0.280
RLS 11	34.925	76.200	17.462	2.0	25.680	18.030	0.370
RLS 12	38.100	82.550	19.050	2.4	29.110	15.640	0.470
RLS 13	41.275	88.900	19.050	2.4	32.650	20.300	0.525
RLS 14	44.450	95.250	20.638	2.4	35.100	23.240	0.665
RLS 15	47.625	101.600	20.638	2.4	39.120	26.470	0.743
RLS 16	50.800	101.600	20.638	2.4	39.120	26.470	0.700
RLS 18	57.150	114.300	22.225	2.4	52.460	36.180	0.970
RLS 20	63.500	127.000	23.812	2.4	63.050	44.030	1.250

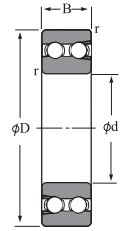
# Double row Deep Groove Ball Bearings



BEARING NUMBER	NOMINAL DIMENSIONS [mm]				LOAD RATING(kN)		LIMITING SPEED		WEIGHT KG
	d	D	B	r	Dynamic C	Stactic Co	Oil Lube	Grease Lube	
4200	10	30	14	0.6	7.7	5.9	20000	15000	0.049
4201	12	32	14	0.6	7.75	6.15	18000	14000	0.053
4202	15	35	14	0.6	9.75	9	16000	12000	0.059
4203	17	40	16	0.6	11.7	10.4	14000	11000	0.090
4204	20	47	18	1	16.4	16	12000	9000	0.140
4205	25	52	18	1	16.3	16.9	9900	7500	0.160
4206	30	62	20	1	22	24.7	8500	6400	0.260
4207	35	72	23	1.1	26.4	30.7	7400	5600	0.46
4208	40	80	23	1.1	33.7	42.4	6300	4700	0.558
4209	45	85	23	1.1	31.9	43.9	6100	4600	0.605
4210	50	90	23	1.1	31.4	44.6	5600	4200	0.651
4211	55	100	25	1.5	37.2	54.1	5000	3800	0.882
4212	60	110	28	1.5	47.9	67.6	4700	3500	1.2
4213	65	120	31	1.5	54.7	78.5	4300	3200	1.59
4214	70	125	31	1.5	62.1	89.8	4100	3100	1.68
4215	75	130	31	1.5	61.6	90.7	3900	2900	1.77

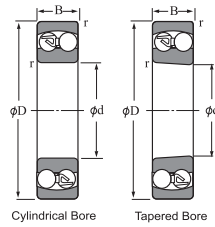


# Double row Deep Groove Ball Bearings



BEARING NUMBER	NOMINAL DIMENSIONS [mm]				LOAD RATING(kN)		LIMITING SPEED		WEIGHT KG
	d	D	B	r	Dynamic C	Stactic Co	Oil Lube	Grease Lube	
4302	15	42	17	1	13.1	11.7	14000	11000	0.123
4303	17	47	19	1	16.5	15	13000	9400	0.171
4304	20	52	21	1.1	19.5	17	11000	8300	0.227
4305	25	62	24	1.1	26.3	25.7	9000	6700	0.365
4306	30	72	27	1.1	35.5	35.9	7600	5700	0.542
4307	35	80	31	1.5	40.6	41.8	7000	5200	0.752
4308	40	90	33	1.5	46	48.8	6100	4600	1.01
4309	45	100	36	1.5	57.6	62.4	5500	4100	1.35
4310	50	110	40	2	70.4	77.7	5000	3700	1.8
4311	55	120	43	2	84.2	94.4	4600	3400	2.29
4312	60	130	46	2.1	99.2	113	4200	3100	2.87
4313	65	140	48	2.1	107	124	3900	2900	3.46
4314	70	150	51	2.1	115	136	3600	2700	4.21
4315	75	160	55	2.1	132	158	3400	2500	5.15

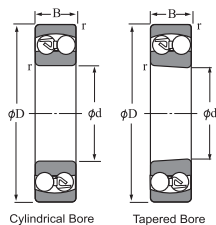
# Self-Aligning Ball Bearings



With Adapter (K+H)

BEARINGNUMBER			NOMINAL DIMENSIONS[mm]				LOAD RATING(kN)		LIMITING SPEED(RPM)		Weight of
Cylindrical Bore	Tapered Bore	Tapered Bore with adapter	d	D	B	r	C	Co	Grease Lube	Oil Lube	bearing KG
1200	1200K	1200 K+H	10	30	9	0.6	5.50	1.20	23000	28000	0.034
1201	1201K	1201 K+H	12	32	10	0.6	5.60	1.25	21000	26000	0.040
1202	1202K	1202 K+H	15	35	11	0.6	7.45	1.75	18000	22000	0.049
1203	1203K	1203 K+H	17	40	12	0.6	7.90	2.00	16000	20000	0.073
1204	1204K	1204 K+H	20	47	14	1.0	9.90	2.60	14000	17000	0.120
1205	1205K	1205 K+H	25	52	15	1.0	12.10	3.30	12000	14000	0.141
1206	1206K	1206 K+H	30	62	16	1.0	15.60	4.65	9900	12000	0.220
1207	1207K	1207 K+H	35	72	17	1.1	15.80	5.10	8500	10000	0.323
1208	1208K	1208 K+H	40	80	18	1.1	19.20	6.50	7500	9200	0.417
1209	1209K	1209 K+H	45	85	19	1.1	21.80	7.35	7000	8500	0.465
1210	1210K	1210 K+H	50	90	20	1.1	22.70	8.10	6500	7900	0.525
1211	1211K	1211 K+H	55	100	21	1.5	26.80	10.00	5800	7100	0.705
1212	1212K	1212 K+H	60	110	22	1.5	30.20	11.50	5200	6400	0.900
1213	1213K	1213 K+H	65	120	23	1.5	31.00	12.50	4800	5800	1.150
1214	1214K	1214 K+H	70	125	24	1.5	34.60	13.80	4600	5700	1.260
1215	1215K	1215 K+H	75	130	25	1.5	38.80	15.70	4300	5300	1.360
1216	1216K	1216 K+H	80	140	26	2.0	39.80	17.00	4000	4900	1.670
1217	1217K	1217 K+H	85	150	28	2.0	49.20	20.80	3800	4600	2.070
1218	1218K	1218 K+H	90	160	30	2.0	56.80	23.40	3500	4300	2.520
1219	1219K	1219 K+H	95	170	32	2.1	57.00	24.30	3300	4000	3.100
1220	1220K	1220 K+H	100	180	34	2.1	69.00	29.70	3100	3800	3.700

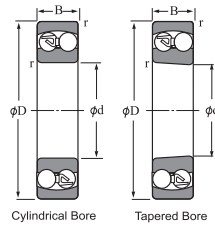
# Self-Aligning Ball Bearings



With Adapter (K+H)

BEARINGNUMBER			NOMINAL DIMENSIONS[mm]				LOAD RATING(kN)			LIMITING SPEED(RPM)		Weight of
Cylindrical Bore	Tapered Bore	Tapered Bore with adapter	d	D	B	r	Dynamic	Stactic	Grease	Oil	bearing	
Bore	Bore	with adapter					C	Co	Lube	Lube	KG	
1300	1300K	1300	K+H	10	35	11	0.6	7.25	1.60	20000	24000	0.058
1301	1301K	1301	K+H	12	37	12	1.0	9.40	2.15	18000	22000	0.067
1302	1302K	1302	K+H	15	42	13	1.0	9.55	2.30	16000	20000	0.094
1303	1303K	1303	K+H	17	47	14	1.0	12.50	3.20	14000	17000	0.130
1304	1304K	1304	K+H	20	52	15	1.1	12.40	3.30	13000	15000	0.163
1305	1305K	1305	K+H	25	62	17	1.1	18.00	5.00	9900	12000	0.257
1306	1306K	1306	K+H	30	72	19	1.1	21.30	6.30	8700	11000	0.387
1307	1307K	1307	K+H	35	80	21	1.5	25.1	7.85	7600	9300	0.510
1308	1308K	1308	K+H	40	90	23	1.5	29.5	9.7	6900	8400	0.715
1309	1309K	1309	K+H	45	100	25	1.5	38.1	12.7	6100	7500	0.957
1310	1310K	1310	K+H	50	110	27	2.0	43.40	14.10	5600	6800	1.210
1311	1311K	1311	K+H	55	120	29	2.0	51.30	17.90	5000	6200	1.580
1312	1312K	1312	K+H	60	130	31	2.1	57.20	20.80	4500	5500	1.960
1313	1313K	1313	K+H	65	140	33	2.1	61.70	22.90	4300	5200	2.450
1314	1314K	1314	K+H	70	150	35	2.1	74.00	27.70	4000	4900	2.990
1315	1315K	1315	K+H	75	160	37	2.1	78.90	29.90	4000	4900	3.560
1316	1316K	1316	K+H	80	170	39	2.1	88.10	33.10	3500	4300	4.180
1317	1317K	1317	K+H	85	180	41	3.0	97.30	37.80	3300	4000	4.980
1318	1318K	1318	K+H	90	190	43	3.0	116.00	44.40	3100	3800	5.800
1319	1319K	1319	K+H	95	200	45	3.0	132.00	50.80	2900	3600	6.690
1320	1320K	1320	K+H	100	215	47	3.0	143.00	57.30	2800	3400	8.300

# Self-Aligning Ball Bearings



With Adapter (K+H)

BEARINGNUMBER		NOMINAL DIMENSIONS[mm]				LOAD RATING(kN)		LIMITING SPEED(RPM)		Weight
Cylindrical Bore	Tapered Bore	d	D	B	r	Dynamic	Stactic	Grease	Oil	KG
						C	Co	Lube	Lube	
2200	2200 K	10	30	14	0.6	7.40	1.60	23000	29000	0.047
2201	2201 K	12	32	14	0.6	7.65	1.75	21000	26000	0.053
2202	2202 K	15	35	14	0.6	7.70	1.85	18000	22000	0.060
2203	2203 K	17	40	16	0.6	9.80	2.40	16000	20000	0.088
2204	2204 K	20	47	18	1.0	12.60	3.30	14000	17000	0.140
2205	2205 K	25	52	18	1.0	12.60	3.50	12000	15000	0.163
2206	2206 K	30	62	20	1.0	15.60	4.65	10000	12000	0.260
2207	2207 K	35	72	23	1.1	21.60	6.60	8500	10000	0.403
2208	2208 K	40	80	23	1.1	22.40	7.40	7600	9300	0.505
2209	2209 K	45	85	23	1.1	23.30	8.15	7000	8500	0.545
2210	2210 K	50	90	23	1.1	23.30	8.50	6500	7900	0.590
2211	2211 K	55	100	25	1.5	26.80	10.00	5800	7100	0.810
2212	2212 K	60	110	28	1.5	34.10	12.60	5300	6500	1.090