



STONE CRUSHER INDUSTRY



KYK[®]
BEARINGS
KYK CORPORATION LTD., OSAKA, JAPAN



Types of Crushers



KYK[®]
BEARINGS
KYK CORPORATION LTD., OSAKA, JAPAN

STONE CRUSHERS



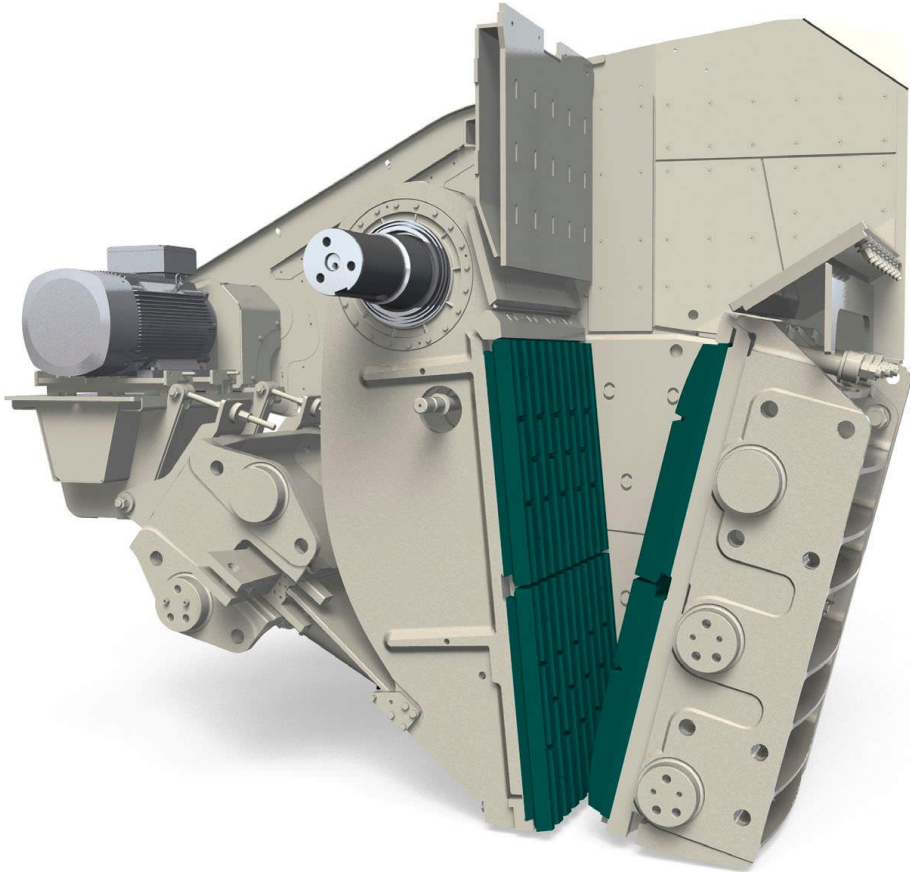
KYK Corporation Ltd. Osaka, Japan

Types of Crushers



KYK[®]
BEARINGS
KYK CORPORATION LTD., OSAKA, JAPAN

JAW CRUSHERS



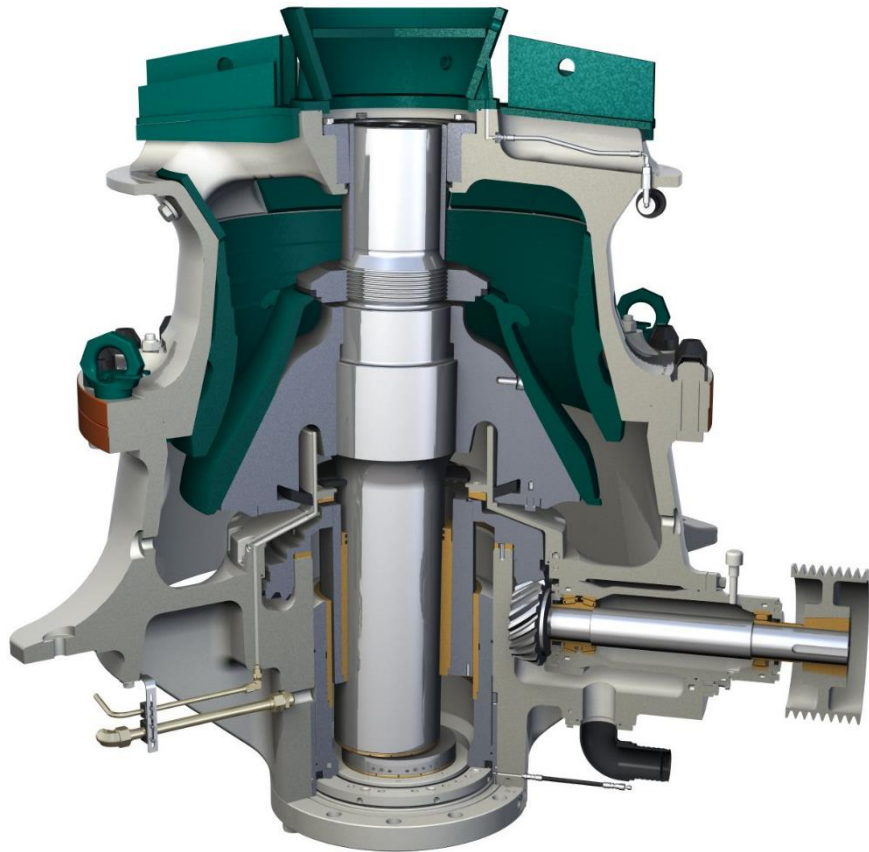
KYK Corporation Ltd. Osaka, Japan

Types of Crushers



KYK[®]
BEARINGS
KYK CORPORATION LTD., OSAKA, JAPAN

CONE CRUSHERS



KYK Corporation Ltd. Osaka, Japan

Crushers Accessories-Vibrating screens



KYK[®]
BEARINGS
KYK CORPORATION LTD., OSAKA, JAPAN

VIBRATING SCREENS



KYK Corporation Ltd. Osaka, Japan

Crushers Accessories- Conveyors



BELT CONVEYERS



KYK CRUSHER INDUSTRY BEARINGS

KYK Spherical Roller Bearing Features:

- High Load Carrying capacity.
- High Speed performance – high operating temperature.
- High Strength cage (Steel & Brass).
- Low Noise and Vibration.



KYK Spherical Roller Bearing for Vibration Screens Features :

- Machined brass cage guided on outer ring MA
- Reduce the impact on cages by two row of rollers in different speed
- With preset optimum radial clearances
- Reduce the temperature of bearings effectively when in operation.



KYK CRUSHER INDUSTRY BEARINGS

KYK Cylindrical Roller Bearing Features:

- High radial load carrying capacity.
- High Strength brass cage – reduce wear and improves performance in vibration equipment.
- High strength press steel and polyamide cages.
- Low Noise and heat generation.



KYK Deep Groove Ball Bearing Features:

- Increased dynamic load rating.
- Increased life in operation.
- Bearings for Conveyor idlers with C3 clearance
- Low noise and vibration (Z3V3) for motors



KYK Tapered Roller Bearing Features:

- High load carrying capacity.
- High Strength cage.
- can take more impact loads
- Low noise and good running smoothness.



KYK CRUSHER INDUSTRY BEARINGS

KYK Bearing Unit Futures:

- High Load Carrying capacity.
- Three lips seals (increases bearing life).
- Secure locking shaft for all speed, load and vibration condition.



KYK CRUSHER INDUSTRY BEARINGS

KYK Plummer Block Features:

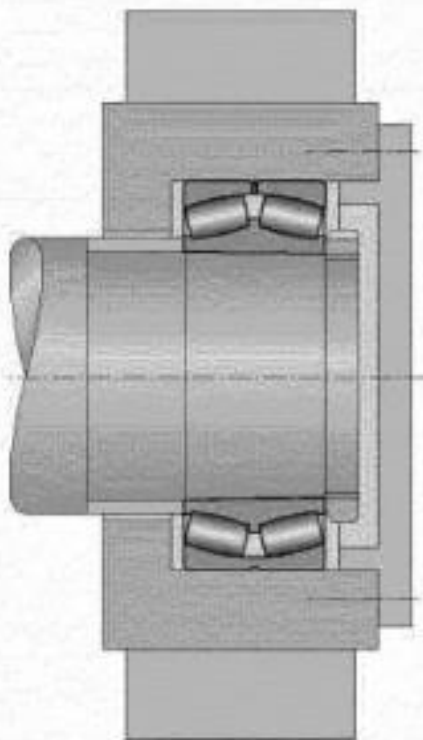
- High Load Carrying capacity.
- Split housing allows easy mounting and dismounting.
- Supplied with retaining rings and felt washers
- Various sealing options available.
- Multi lubrication points.



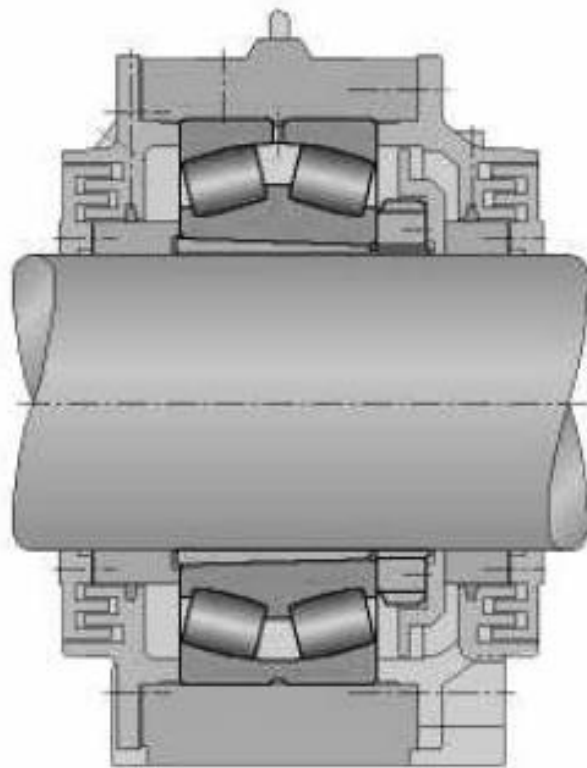
BEARING ARRANGEMENTS



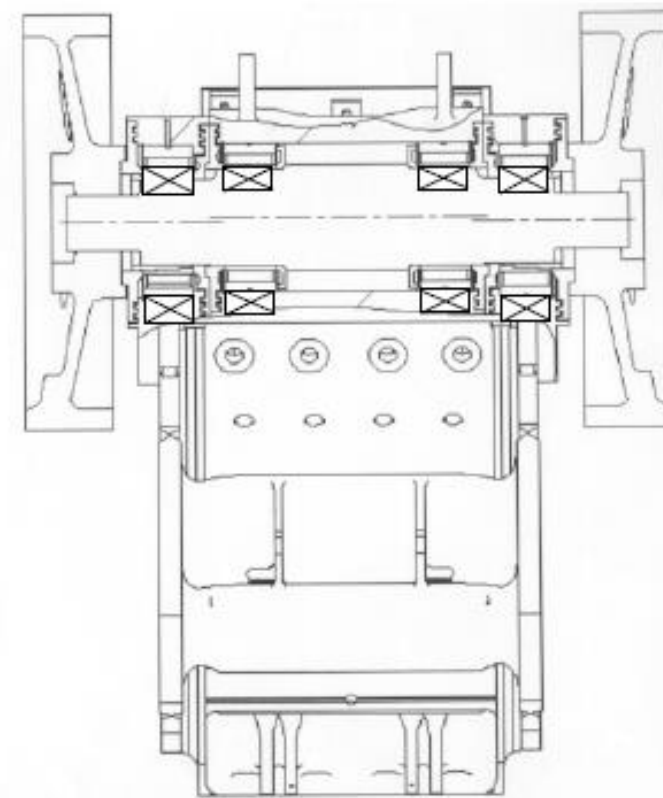
KYK[®]
BEARINGS
KYK CORPORATION LTD., OSAKA, JAPAN



STONE CRUSHER
22340MBW33C3



IMPACT MILL
23272KMBW33C3



JAWCRUSHER
23164KMBW33C3, 24068MBW33C3

MOUNTING PROCEDURES



Cleanliness

Choose a clean environment.
Work in an atmosphere free
from dust or moisture. Insure
cleanliness by use of clean
lint free clothes.



MOUNTING PROCEDURES



Plan the work

Keep all necessary tools at hand and ready.

This reduces the amount of time for the job and lessens the chance for dirt to get into the bearing.



MOUNTING PROCEDURES



Inspection and preparation

Both SHAFT AND HOUSING should be thoroughly cleaned before proceeding. Housings should be cleaned, including blowing out the oil holes.

Check the Shaft and Housing sizes prior to mounting

Check for any burs or dirt in the housing and shaft

**DON'T REMOVE THE BEARING FROM ITS PACKING
UNTIL ACTUALLY READY TO MOUNT IT.**

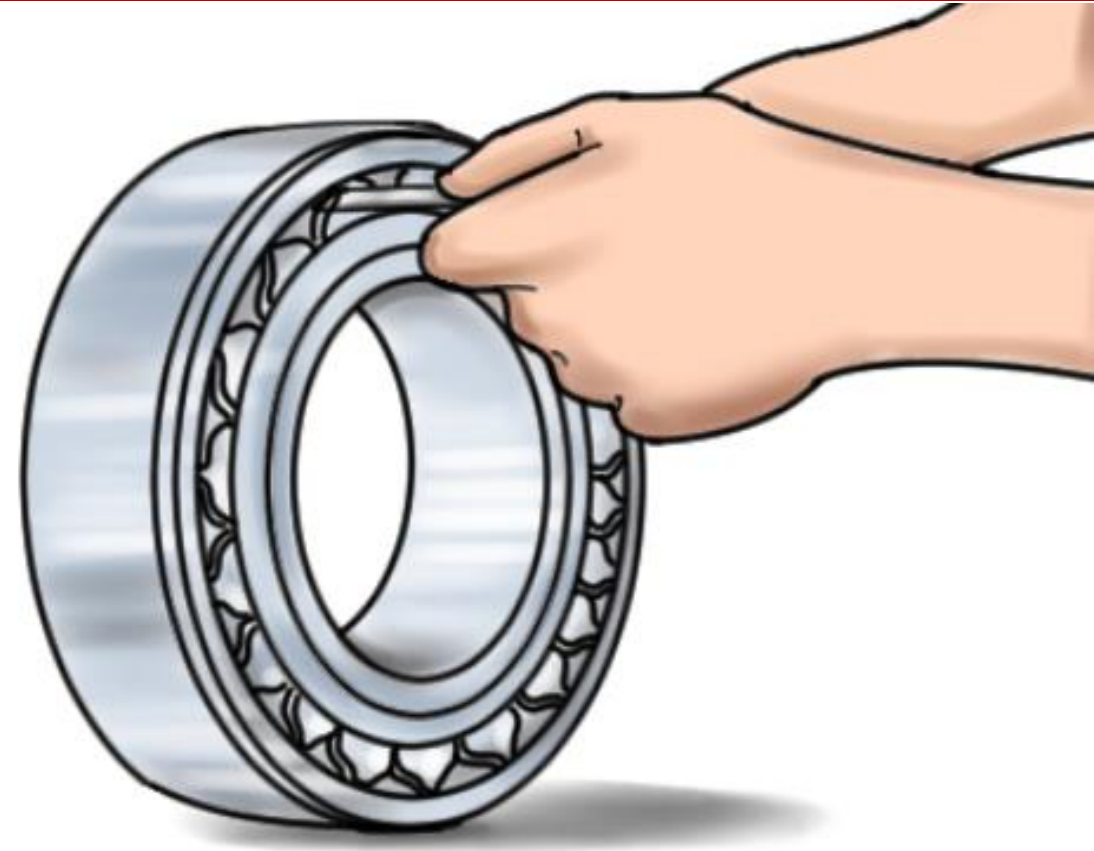


MOUNTING PROCEDURES



Measure the clearance of the bearing prior to mounting

Make sure it is with the required radial clearance specified by manufacturers or from the removed bearings

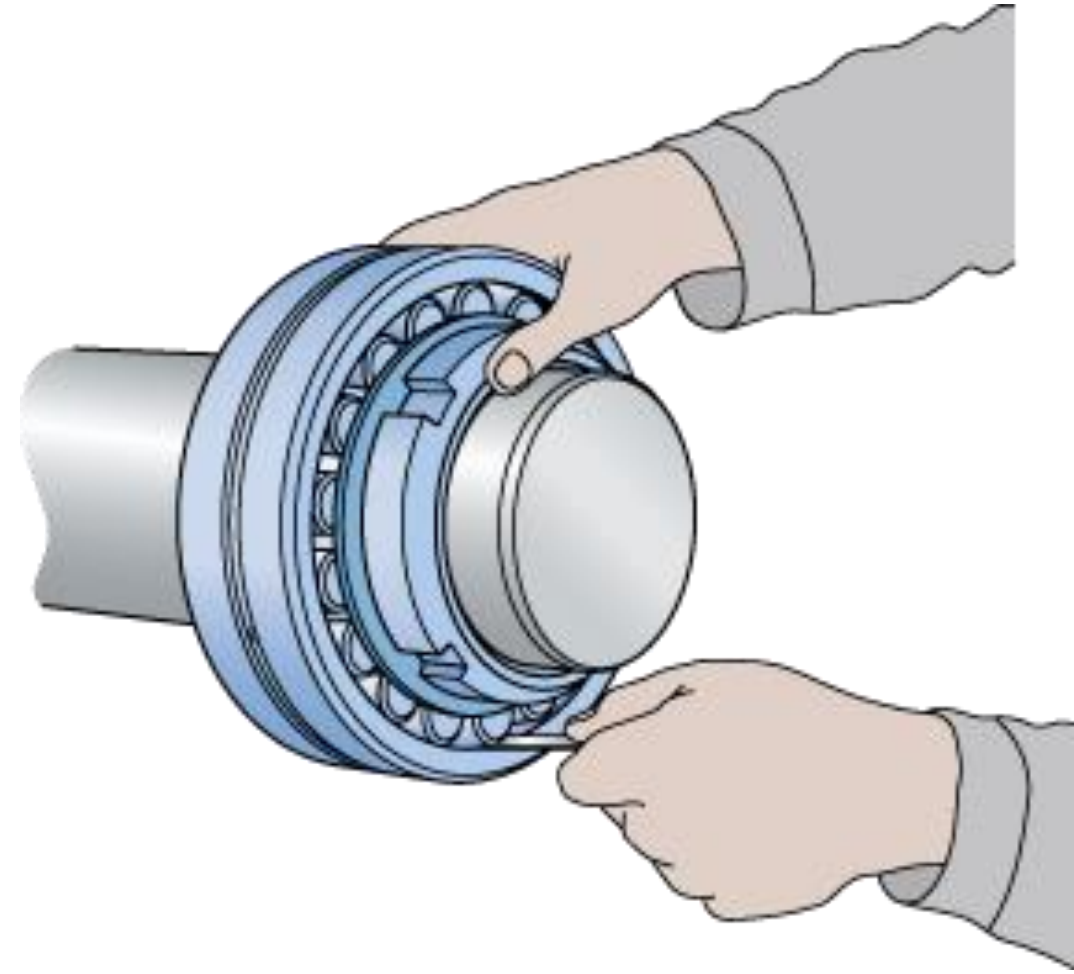


MOUNTING PROCEDURES



Measure the clearance of the bearing after mounting

Make sure that the bearing is having optimum clearance after amounting and make sure the bearing do not have negative clearance



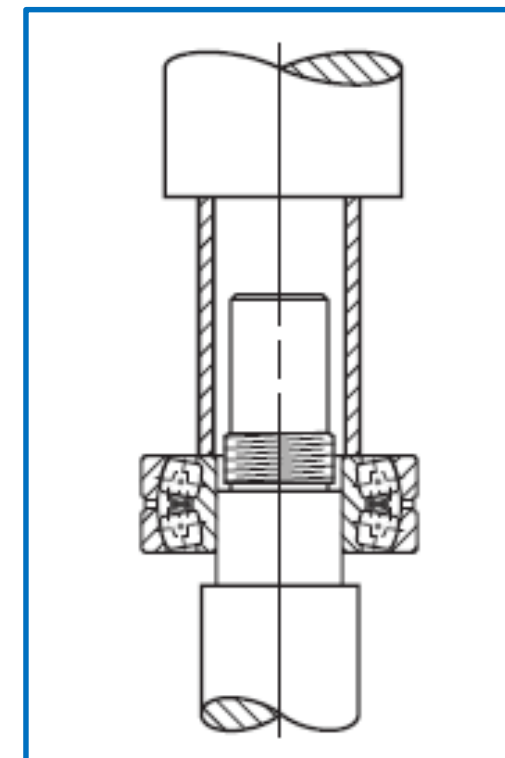
MOUNTING PROCEDURES



KYK[®]
BEARINGS
KYK CORPORATION LTD., OSAKA, JAPAN

Fitting the bearing on the shaft

Drive the bearing in the shaft by applying even pressure on the Inner ring , by driving it with a proper tool or hydraulic press



MOUNTING PROCEDURES



KYK[®]
BEARINGS
KYK CORPORATION LTD., OSAKA, JAPAN

Mounting of bearing by Induction Heating

It is advisable to mount big size bearings by induction heating
Make sure the bearing is not heated over 110 degree centigrade



BEARING FITS



For rolling bearings, Bearings FITS plays a vital role in the performance of the bearings

The life of the bearing is determined the optimal residual clearance of the bearing after fitment, so need pay attention to the fits of the bearings



BEARING FITS



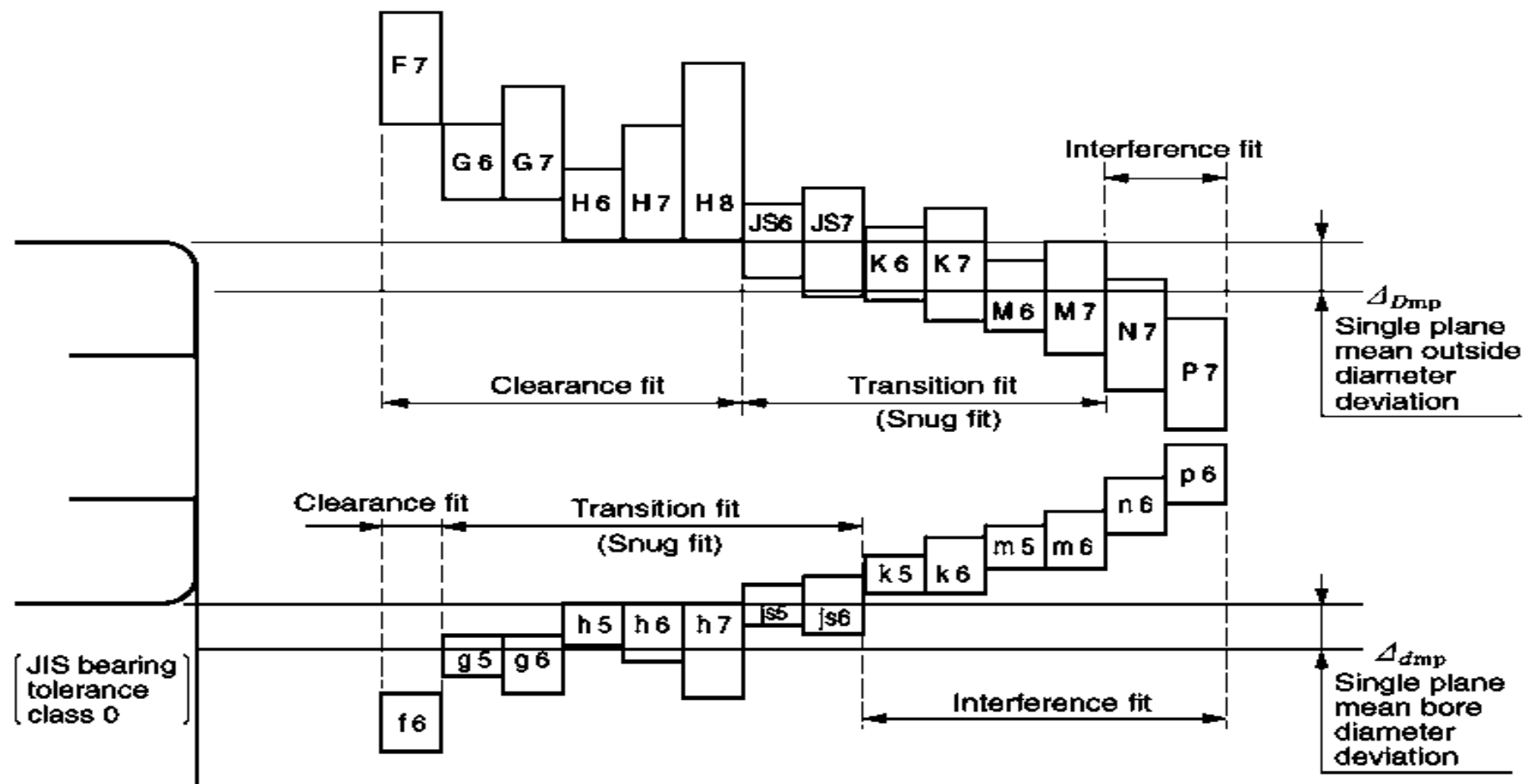
Fit selection

Selection of a proper fit is dependent upon thorough analysis of bearing operating conditions, including surroundings , below is just for example

TYPE	SHAFT	HOUSING
Spherical Roller bearings with Withdrawal sleeve	h7	H7
Spherical Roller bearings - stright bore	h6	H7
Cylindrical roller bearings	m6/k6	N7
Spherical Thrust roller bearings	h6/js6	K7/M7



BEARING FITS



BEARINGS LUBRICATION



Lubrication is an very important aspect of the bearings , you should choose the right lubricant for the right application , for crusher industry we recommend

Lithium complex grease

- Servoplex2/3 from Servo
- Mobilith SHC 1500 from Mobile
- Mobilith SHC 460 from Mobile



BEARINGS LUBRICATION



- Lubrication is very important for a bearing because of the high heat generated and longer running time of the pumps and KYK bearings are using high quality grease **Kyodo Yushi Raremax** in its products.
- This grease has a excellent heat resistance, oxidation resistance, low temperature fluidity, low noise characteristic and rust preventive property.
 - ❖ Temperature range
 - *Minimum: - 30°*
 - *Maximum: 160°C*
- Bearings with Special grease for very high temperature is available on request.

OUR NETWORK



KYK[®]
BEARINGS
KYK CORPORATION LTD., OSAKA, JAPAN

KYK Bearings are supplied to more than
50 Countries Worldwide.

To become a distributor or to find your local
dealer, please contact us.



KYK Corporation Ltd. Osaka, Japan

KYK[®]
B E A R I N G S

KYK CORPORATION LTD.
OSAKA, JAPAN

ABOUT US



KYK Corporation Ltd. (Formerly: Yamakai Bearing Ltd) is one of the oldest **Japanese Manufacturers** of ball and roller bearings, established in **1952**, in **Osaka, Japan**.

Our bearings are supplied to more than **50 countries worldwide** and approved in a wide variety of engineering industries.

KYK Bearings cater to the growing premium quality requirement of the market. Strict adherence to **Japanese Precision and Quality Standards** make KYK the preferred choice of product.

GULF WORLDWIDE BEARINGS FZE

Official Distribution Partner for KYK Bearings



Precision Japanese Technology, Since 1953

CONTACT:

GULF WORLDWIDE BEARINGS FZE
Plot S 20408, P.O. Box 261626
Jebel Ali Free Zone,
Dubai- U.A.E

Tel: +9714-8866199 / 8866036

Fax: +9714-8866037

Email: gwborg@emirates.net.ae

Website: www.gwborg.com

Website: www.kykborg.com